



INDOFINE Chemical Company, Inc.

121 Stryker Lane, Bldg. 30, Suite 1 • Hillsborough, NJ 08844 • U.S.A.

Phone: (908) 359-6778 • FAX: (908) 359-1179

website: www.indofinechemical.com

e-mail: chemical@indofinechemical.com

CERTIFICATE OF ANALYSIS

Catalog Number: 020602

Product Name: **TOMATINE**
(Tomatin)

CAS Number: [17406-45-0]

Lot Number: 1605795

Chemical Formula: $C_{50}H_{83}NO_{21}$

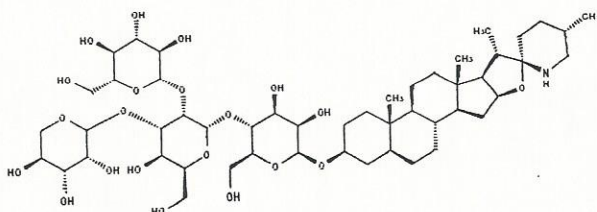
Molecular Weight: 1034.20

Appearance: White powder

Loss on Drying: 1.8%

Storage: Store in a cool, dry place

Purity(HPLC): 97.63%





INDOFINE Chemical Company, Inc.

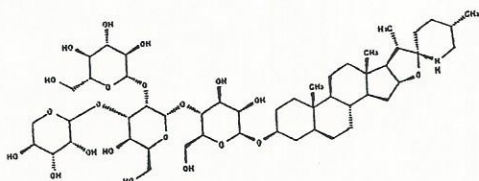
121 Stryker Lane, Bldg. 30, Suite 1 • Hillsborough, NJ 08844 • U.S.A.

Phone: (908) 359-6778 • FAX: (908) 359-1179

website: www.indofinechemical.com

e-mail: chemical@indofinechemical.com

HPLC ANALYSIS



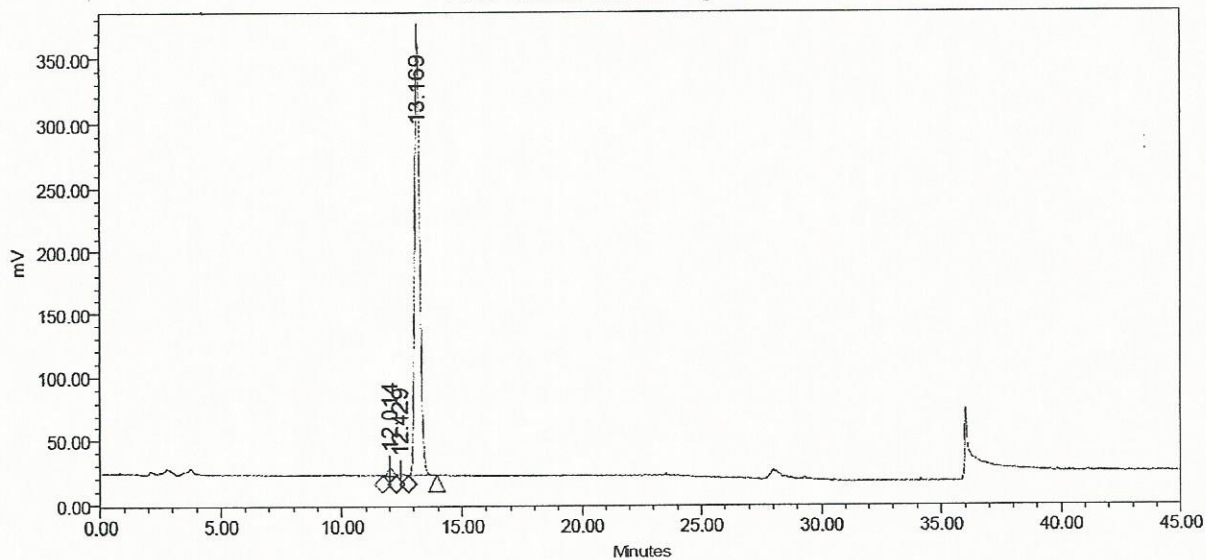
Catalog No.: 020602
Product Name: Tomatine
Lot No.: 1605795

SAMPLE INFORMATION

Sample Name: Tomatine
Sample Type: Unknown
Vial: 44
Injection #: 1
Injection Volume: 10.00 ul
Run Time: 45.0 Minutes

Acquired By: System
Sample Set Name:
Acq. Method Set: Tomatine
Processing Method: Samples
Channel Name: eSATIN-Ch1
Proc. Chnl. Descr.: Channel 1

Auto-Scaled Chromatogram



Peak Results

	Name	RT	Area	% Area	USP Plate Count	USP Resolution
1		12.014	95263	1.77		
2		12.429	31931	0.59		
3		13.169	5246471	97.63		